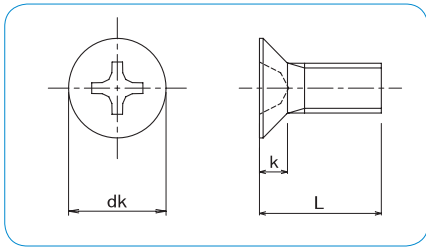


CROSS RECESS FLAT HEAD MACHINE SCREW JIS B1111 appendix



- **Material · plating**
 Steel / Zinc 3Cr. Plated
 Steel / Zinc Black 3Cr. Plated



How to order or inquire: R830-B1111FH-finish code diameter x length

Example: R830-B1111FH-CR3 3x10

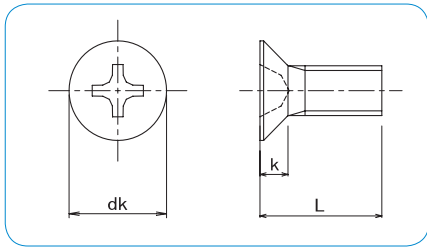
Finish codes: CR3 for Zinc 3Cr. Plated, CR3B for Black 3Cr. Plated

	M2	M2.3	M2.5	M2.6	M3	M3.5	M4	M5	M6	M8	M10	
dk	4	4.6	5	5.2	6	7	8	10	12	16	20	
k	1.2	1.35	1.45	1.5	1.75	2	2.3	2.8	3.4	4.4	5.7	
Drive Size	1				2				3		4	

pcs / Box											
$\frac{d}{L}$	M2	M2.3	M2.5	M2.6	M3	M3.5	M4	M5	M6	M8	M10
3	13,000	8,000	8,000	8,000							
4	12,000	8,000	6,000	6,000	4,000						
5	10,000	7,000	6,000	6,000	4,000	4,000	3,000				
6	9,000	6,000	5,000	5,000	3,500	4,000	2,500	1,200			
8	7,000	5,000	4,000	4,000	2,500	3,000	2,000	1,200	800		
10	5,000	4,000	3,000	3,000	2,200	2,500	1,800	1,100	700	300	
12	4,000	2,500	2,500	2,500	2,500	2,000	1,500	1,000	600	300	
14	3,500	2,200	2,000	2,000	2,500		1,200	800	600	250	
15	3,000	2,200	1,800	2,000	2,000		1,200	700	500	250	
16	2,500	2,000	1,800	1,800	2,000	1,600	1,200	700	500	250	250
18	2,500	2,000	1,500	1,600	1,800		1,000	600	450	200	
20	2,000	1,500	1,500	1,500	1,500	1,200	900	600	400	200	200
22	1,500				1,400		900	800	500	250	
25		1,000		1,000	1,200		700	700	500	220	180
30				800	1,000		600	600	400	200	150
35					700		500	500	300	180	120
40					600		600	400	300	160	100
45					800			350	250	150	100
50					600		450	300	200	130	80
55					600		400	250	200	120	80
60					500		300	230	180	100	70
65					500		300	200	150	100	70
70					800		300	200	120	90	60
75							300	200	200	90	60
80							300	200	200	90	50
85											50
90							400	250	170	80	50
95											50
100							400		150	80	50

* ... Zinc 3Cr. Plated only

CROSS RECESS FLAT HEAD MACHINE SCREW JIS B1111 appendix



●Material
Stainless Steel A2



How to order or inquire: R830-B1111FH-material code diameter x length

Example: R830-B1111FH-A2 4x16

Material codes: A2 for Stainless Steel A2

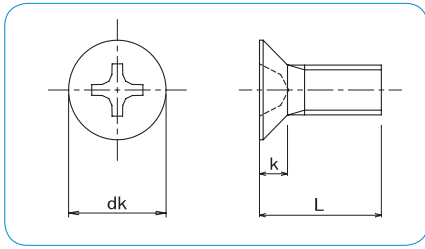
	M2	M2.3	M2.5	M2.6	M3	M4	M5	M6	M8	M10
dk	4	4.6	5	5.2	6	8	10	12	16	20
k	1.2	1.35	1.45	1.5	1.75	2.3	2.8	3.4	4.4	5.7
Drive Size	1				2			3		4

		pcs / Box									
d	L	M2	M2.3	M2.5	M2.6	M3	M4	M5	M6	M8	M10
3		10,000									
4		10,000	10,000	8,000	8,000	3,000					
5		10,000	8,000	6,000	6,000	2,000	2,000				
6		10,000	8,000	6,000	6,000	2,000	1,000	1,000			
8		8,000	6,000	5,000	4,000	2,000	1,000	1,000	500		
10		6,000	6,000	4,000	4,000	2,000	1,000	1,000	500		
12		6,000	4,000	3,000	3,000	2,000	1,000	500	500	200	
14		4,000	4,000	2,500	2,000	2,000	1,000	500	500	200	
15		4,000	3,000	2,500	2,000	1,000	1,000	500	500	200	
16		3,000	3,000	2,500	2,000	1,000	1,000	500	200	200	100
18		3,000	2,000	2,000	2,000	1,000	500	500	200	200	
20		3,000	2,000	2,000	2,000	1,000	500	500	200	100	100
22							500	500			
25		2,000	1,000	1,500	1,000	1,000	500	500	200	100	100
30		1,000	1,000	1,000	1,000	1,000	500	200	200	100	100
35						500	500	200	200	100	50
40						500	200	200	100	50	50
45						500	200	200	100	50	50
50						500	200	100	100	50	50
55							200	100	100	50	50
60							200	100	100	50	50
65							200	100	100	50	50
70							200	100	100	50	50
75							200	100	100	50	50
80							200	100	100	50	50
90							200	100	50	50	50
100							200	100	50	50	50

SUS 316L

TITAN

CROSS RECESS FLAT HEAD MACHINE SCREW JIS B1111 appendix



RoHS Directive Compliance

	M3	M4	M5	M6	M8
dk	6	8	10	12	16
k	1.75	2.3	2.8	3.4	4.4
Drive Size	2			3	

How to order or inquire: R830-B1111FH-material code diameter x length
 Example: R830-B1111FH-316L 4x16
 Material codes: 316L for Stainless Steel 316L

How to order or inquire: R830-B1111FH-material code diameter x length
 Example: R830-B1111FH-TI 4x16
 Material codes: TI for Titanium

● **Material**

SUS 316L Stainless Steel A4



pcs / Box

L \ d	M3	M4	M5	M6	M8
5	500				
6	500	300			
8	500	300	200		
10	500	300	200	100	
12	500	300	200	100	
15	500	300	200	100	50
16	500	300	200	100	50
20	500	300	200	100	50
25	500	300	200	100	50
30	500	300	200	100	50
35		300	200	100	50
40	500	300	200	100	50
45		300	200	100	50
50		300	200	100	50
55		300	200	100	50
60		300	200	100	50
65		300	200	100	50
70			200	100	50
75			200	100	50
80				100	50
90				100	50
100				100	50

● **Material**

TITAN



pcs / Box

L \ d	M3	M4	M5	M6
6	500	300		
8	500	300	200	
10	500	300	200	100
12	500	300	200	100
15	500	300	200	100
16	500	300	200	100
20	500	300	200	100
25	500	300	200	100
30	500	300	200	100
35		300	200	100
40		300	200	100
45			200	100
50			200	100
60				100