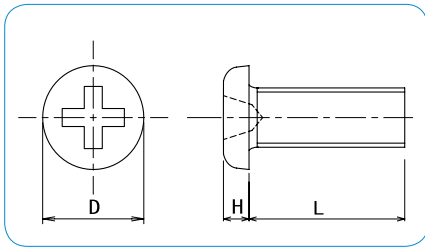


CROSS RECESS PAN HEAD MACHINE SCREW #0 , type1



How to order or inquire: R830-JC01PH-finish code diameter x length

Example: R830-JC01PH-CR3 1.7x5

Finish codes: CR3 for Zinc 3Cr. Plated, CR3B for Black 3Cr. Plated

	M1.0	M1.2	M1.4	M1.6	M1.7	M2.0	M2.3	M2.5	M2.6
D	1.8	1.8	2	2.4	2.5	3	3.5	3.8	4
H	0.5	0.5	0.5	0.55	0.5	0.6	0.7	0.8	0.8

Material - plating

Steel / Zinc 3Cr. Plated

Steel / Zinc Black 3Cr. Plated

pcs / Box

L \ d	M1.0	M1.2	M1.4	M1.6	M1.7	M2.0	M2.3	M2.5	M2.6
1.4			10,000						
1.5			10,000		10,000	10,000			
1.6			10,000		10,000				
1.8			10,000		10,000	10,000			
2.0			10,000		10,000	10,000			
2.2			10,000		10,000	10,000			
2.5			10,000	10,000	10,000	10,000			
2.8			10,000		10,000	10,000			
3.0			10,000	10,000	10,000	10,000	5,000	5,000	5,000
3.2			10,000						
3.5			10,000	10,000	10,000	10,000			5,000
4.0			10,000	10,000	10,000	5,000	5,000	5,000	5,000
4.5			10,000	10,000	10,000	5,000			
5.0			10,000	10,000	10,000	5,000	5,000	5,000	5,000
5.5			10,000		5,000	5,000			
6.0			10,000	5,000	5,000	5,000	5,000	5,000	5,000
7.0			10,000		5,000	5,000			
8.0			5,000			5,000		5,000	5,000
9.0						5,000			
10.0			5,000			5,000			5,000
11.0						5,000			
12.0						4,000			

How to order or inquire: R830-JC01PH-material code diameter x length

Example: R830-JC01PH-A2 1.7x5

Material codes: A2 for Stainless Steel A2

Material

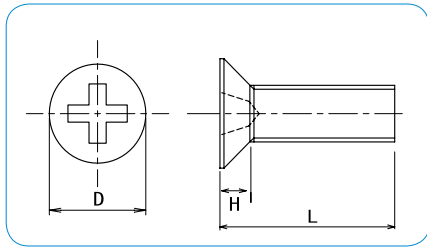
Stainless Steel A2

pcs / Box

L \ d	M1.0	M1.2	M1.4	M1.6	M1.7	M2.0	M2.3	M2.5	M2.6
2.0	2,000	2,000	2,000	2,000	2,000	2,000			
2.5				2,000	2,000	2,000			
3.0	2,000	2,000	2,000	2,000	2,000	2,000			2,000
3.5					2,000	2,000			
4.0	2,000	2,000	2,000	2,000	2,000	2,000			2,000
5.0	2,000	2,000	2,000	2,000	2,000	2,000			2,000
6.0			2,000	2,000	2,000	2,000			2,000
7.0				2,000	2,000	2,000			
8.0			2,000	2,000	2,000	2,000			2,000
10.0			2,000	2,000	2,000	2,000			
12.0				2,000	2,000	2,000			

ver gg15b

CROSS RECESS FLAT HEAD MACHINE SCREW #0 , type1



How to order or inquire: R830-JC01FH-finish code diameter x length

Example: R830-JC01FH-CR3 1.7x5

Finish codes: CR3 for Zinc 3Cr. Plated, CR3B for Black 3Cr. Plated

	M1.4	M1.7	M2.0	M2.6
D	2	2.5	3	4
H	0.45	0.5	0.6	0.8

●Material - plating

Steel / Zinc 3Cr. Plated

Steel / Zinc Black 3Cr. Plated

		pcs / Box			
L \ d	M1.4	M1.7	M2.0	M2.6	
1.6	10,000				
1.8	10,000				
2.0	10,000	10,000	10,000		
2.2	10,000	10,000	10,000		
2.5	10,000	10,000	10,000		
3.0	10,000	10,000	10,000	5,000	
3.5		10,000	10,000		
4.0	10,000	10,000	5,000	5,000	
4.5		10,000	5,000		
5.0	10,000	10,000	5,000	5,000	
5.5		5,000	5,000		
6.0		5,000	5,000	5,000	
7.0			5,000		
8.0			5,000	5,000	
9.0			5,000		
10.0			5,000		

How to order or inquire: R830-JC01FH-material code diameter x length

Example: R830-JC01FH-A2 1.7x5

Material codes: A2 for Stainless Steel A2

●Material

Stainless Steel A2

		pcs / Box				
L \ d	M1.4	M1.6	M1.7	M2.0	M2.6	
3.0	2,000	2,000	2,000	2,000	2,000	
3.5	2,000		2,000	2,000		
4.0	2,000	2,000	2,000	2,000	2,000	
5.0	2,000	2,000	2,000	2,000	2,000	
6.0	2,000	2,000	2,000	2,000	2,000	
7.0			2,000	2,000	2,000	
8.0	2,000	2,000	2,000	2,000	2,000	
10.0		2,000	2,000	2,000		
12.0			2,000			