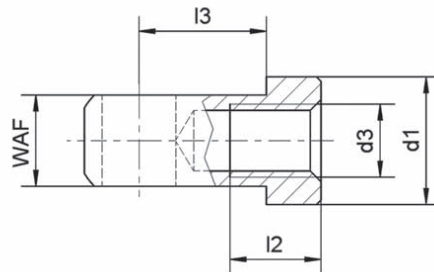
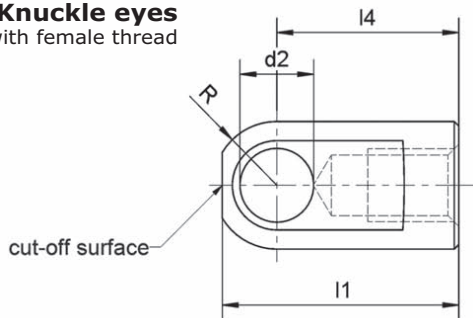


Knuckle eyes with female thread



Example for ordering: Knuckle eye with female thread, d1=18 mm,
metric regular thread d3=M 10x1.5;
Knuckle eye size 10, M 10x1.5
Order number: 10 47 0000 0010



mbo standard 47

Size	Order number	d1 Ø	d2 +0.1	d3 ¹⁾		R	WAF -0.1	l1	l2	l3	l4	Mass (kg) per 100 pieces
				Regular thread	Fine-pitch thread							
3.5	10 47 0000 0035	8	4.1	M 3.5	-	4	4	16	3	8	12	0.32
5	10 47 0000 0005	10	6.1	M 5x0.8	-	5	6	20.5	8	10	16	0.69
8	10 47 0000 0008	14	8.1	M 8x 1.25	-	7	10	26	10	14	20	1.8
10	10 47 0000 0010	18	8.1	M 10x1.5	-	9	12	33	14	17	25	3.98
14	16 47 0000 0014	25	14.1	-	M 14x1.5	12,5	14	51	18	21	40	11.2

¹⁾ code for thread:
regular thread
regular thread, left-handed
fine-pitch thread
fine-pitch thread, left-handed

no code
LH
FG
FGLH

18_01
01/2008

Material:

steel

alternative: stainless steel



Surface protection:

electroplated galvanized, passivated in white-blue (silver/clear)

Special versions upon request