

SHARS Adjustable 5C Threaded Stop



Hardened fits all collets with 1-3/64"-24 Internal Thread

Order No.	USA Brand	SHARS (F)
202-5716	\$8.95	\$4.65

SHARS 5C Universal Collet Stop



Converts standard 1" Capacity lathe collets into solid stop or spring ejector stop collets without alteration of the standard collets

Order No.	USA Brand	SHARS (D)
202-5715	\$19.50	\$9.75

SHARS ADJUSTABLE DRESSER



- Use on all grinding machines.
- Dress overall diameter and force of wheel.
- Max. height 7". Dress width: Any size.

Free: 1pc diamond dresser 202-3104D

Order No.	Price(D)
202-3209	\$39.00

SHARS Profile Wheel Dresser



- Extremely accurate and versatile, can dress 2-angles tangent to a radius in one continuous motion within .0001" (.002mm)
- Precise and sharp contours, concave or convex, are consistently obtained at a full 180° range
- Overall height: 7"
- Swivel arm: 180
- Max. size grind wheel: 8"
- Max. outside radius (on wheel): 5/8" approx
- Max. inside radius (on wheel): 1" approx
- Spindle: 1" outside dia.
- Weight: 11 lbs

Free: 1pc 202-3104d diamond dresser

Weight	Order No.	Price(D)
11 lbs	202-3105	\$410.00

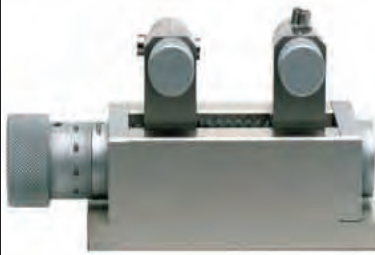
SHARS Single Point Diamond Dressers



Carat	3/8x3"	7/16x3"	Price(D)	1/4 Carat 60°	Order No.	Price(D)
1/4	202-3104D	202-3110	\$6.80	1/4x3"	202-3103D	\$6.80
1/3	202-3112	202-3115	9.85	5/16x3	202-3102	5.60
1/2	202-3113	202-3116	13.60	1/8x3	202-3101	5.60
3/4	202-3114	202-3117	20.40			

SHARS Precision Duplex Dresser

- Designed to simultaneously dress both sides of a grinding wheel, precisely in one setting and without deformation
- Used for dressing surface grinding wheels to required precision size



Features:

- Micrometer lead screw
- Manufactured of tool steel and hardened throughout to HRC 60 for life time use
- SD60 is designed with two-direction screw to simultaneously dress both sides of a grinding wheel by adjusting hand wheel, which keeps good homogeneity in dressing

Specifications	
Width of Wheel	1.57"
Max. Dressing Depth	1.57"
Min. Dressing Depth	.0008"

Order No.	Price(B)
202-3106	\$145.00

SHARS HI-LOW ADJUSTABLE DRESSER



- For use on all grinding machines, dress O.D. and face.
- Adjustable for 7" height.

Free: 3/8" shank diamond dresser 1pc202-3104D

Order No.	Price(B)
202-3208	\$48.55

SHARS DIAMOND NIB DRESSER

- Designed for use on surface grinders.
- Holds dia.proper 15° angle.
- Base dimension: 2-1/2"x6".
- Key-way:1/2" wide x7/8".
- Includes diamond dresser 5/16"x3"(1/4carat).202-3102



Order No.	Price(D)
202-3202	\$14.95

SHARS Visi-Dress Radius & Wheel Dresser



- With magnifier, it is possible for operator to see dressing procedure through the lens in the spindle
- Angle/Linear dressing range:95° -0-95"
- Center height: 2.5"

- 180° swing arm, graduated (with vernier marking) in 1" spacings
- Max size grinding wheel 8" diameter
- Max outside radius (on wheel) approx.5/8"
- Max inside radius (on wheel) approx 1"
- Spindle: 1"diameter O.D. hardened ground and lapped
- Wt: 7.7 Lbs
- Fixed focus lens (3X)

Free: 1pc diamond dresser 202-3103D
1pc each hex wrench (G1.5, 2.5, 3.4)

Order No.	Price(D)
202-3103	\$345.50