

available from: Maryland Metrics P.O. Box 261 Owings Mills, MD 21117 USA web: <http://mdmetric.com>  
 phones: (410)358-3130 (800)638-1830 faxes: (410)358-3142 (800)872-9329 email: [sales@mdmetric.com](mailto:sales@mdmetric.com)

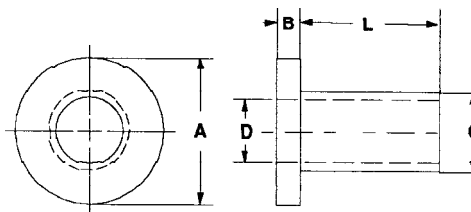
\*Available in other materials. See materials list in index.  
 Other sizes available on request.

## HIGH TECHNOLOGY PLASTIC METRIC SCREW INSULATORS

\*Available in the following materials:

Material Code No.	Material Name	Material Code No.	Material Name	Material Code No.	Material Name	Material Code No.	Material Name
-3	Lexan®, (clear)	-27	PVC	-41	Halar®	-195	Nylon 46, 30% Glass-filled, Flame Retardant, Heat Stabilized
-4	Lexan®, (black)	-28	CPVC	-60	Nylon 6/6, 30% Short Glass-filled	-213	VespeI®
-5	Ultem® 1000	-29	Teflon®	-64	Delrin®, 25% Short Glass-filled	-218	Ryton, 40% Glass-filled, (black), (PPS)
-6	Ultem® 2300, (black)	-30	Tefzel®	-74	Isoplast™, 40% Long Glass Fiber, (natural)	-226	Radel® A200, Polyethersulfone
-11	Polypropylene	-32	PCTFE	-77	Ultem® 2300, (natural)	-228	Radel® AG330, 30% Glass-filled
-13	Polyethylene	-33	Polysulfone	-78	Nylon 6/6, (black)	-229	Radel® R5000, Polyphenylsulfone
-14	ABS	-35	Noryl®	-194	Nylon 46, 30% Glass-filled, Heat Stabilized	-272	PVC, (white)
-15	PEEK®	-37	Kynar®, (PVDF)			-273	PVC, (black)
-18	Nylon 6/6, (natural)	-38	Fiber Glass G10				
-23	Nylon Super Tough	-39	UHMW®				
-24	Delrin®, (white)	-40	PFA, (Teflon®)				

ALL DIMENSIONS GIVEN IN MILLIMETERS



Part No. F108 - (Size Code No.) - (Material Code No.)

Size Code No.	Screw Size	L	A	B	C	D	Size Code No.	Screw Size	L	A	B	C	D
-1	M2 x 0,4	3	4,2	1,0	3,0	2,1	-18	M4 x 0,7	7	8,2	1,5	6,0	4,1
-2	M2 x 0,4	4	4,2	1,0	3,0	2,1	-19	M4 x 0,7	9	8,2	1,5	6,0	4,1
-3	M2 x 0,4	5	4,2	1,0	3,0	2,1	-20	M5 x 0,8	3	10,2	2,0	7,0	5,1
-4	M2 x 0,4	6	4,2	1,0	3,0	2,1	-21	M5 x 0,8	4	10,2	2,0	7,0	5,1
-5	M3 x 0,5	1	6,2	1,0	4,0	3,1	-22	M5 x 0,8	5	10,2	2,0	7,0	5,1
-6	M3 x 0,5	2	6,2	1,0	4,0	3,1	-23	M5 x 0,8	7	10,2	2,0	7,0	5,1
-7	M3 x 0,5	3	6,2	1,0	4,0	3,1	-24	M5 x 0,8	9	10,2	2,0	7,0	5,1
-8	M3 x 0,5	4	6,2	1,0	4,0	3,1	-25	M6 x 1,0	4	12,2	2,0	8,0	6,1
-9	M3 x 0,5	5	6,2	1,0	4,0	3,1	-26	M6 x 1,0	6	12,2	2,0	8,0	6,1
-10	M3 x 0,5	6	6,2	1,0	4,0	3,1	-27	M6 x 1,0	8	12,2	2,0	8,0	6,1
-11	M3 x 0,5	7	6,2	1,0	4,0	3,1	-28	M6 x 1,0	10	12,2	2,0	8,0	6,1
-12	M3 x 0,5	8	6,2	1,0	4,0	3,1	-29	M6 x 1,0	12	12,2	2,0	8,0	6,1
-13	M3 x 0,5	9	6,2	1,0	4,0	3,1	-30	M8 x 1,25	4	14,2	2,5	10,0	8,1
-14	M3 x 0,5	10	6,2	1,0	4,0	3,1	-31	M8 x 1,25	6	14,2	2,5	10,0	8,1
-15	M4 x 0,7	3	8,2	1,5	6,0	4,1	-32	M8 x 1,25	8	14,2	2,5	10,0	8,1
-16	M4 x 0,7	4	8,2	1,5	6,0	4,1	-33	M8 x 1,25	10	14,2	2,5	10,0	8,1
-17	M4 x 0,7	5	8,2	1,5	6,0	4,1	-34	M8 x 1,25	12	14,2	2,5	10,0	8,1