

MOLDED NYLON METRIC NUTS

*Available in the following materials:

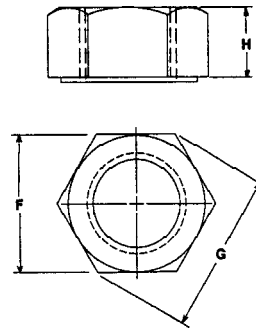
Material Code No.	Material Name
-18	Nylon 6/6, (natural)
-78	Nylon 6/6, (black)

*Available in other materials. See materials list in index.
 Other sizes available on request.

NYLON METRIC HEX NUTS

Part No. GM114 - (Size Code No.) - (Material Code No.)

Size Code No,	Thread Size	F	G	H
-1	M2 x 0,4	3,90	4,50	1,20
-2	M2,5 x 0,45	4,90	5,60	1,80
-3	M3 x 0,5	5,40	6,20	2,20
-4	M3,5 x 0,6	6,90	7,90	2,70
-5	M4 x 0,7	6,90	7,90	3,00
-6	M5 x 0,8	7,90	9,00	4,30
-7	M6 x 1,0	9,90	11,30	5,40
-8	M8 x 1,25	12,90	14,70	6,40
-9	M10 x 1,50	14,80	17,00	9,80

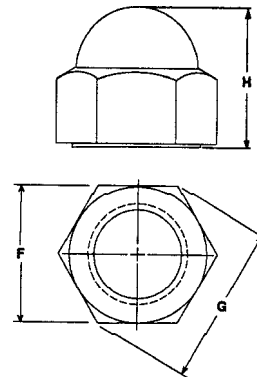


Tolerance on all dimensions +/- .25mm.

NYLON METRIC CAP NUTS

Part No. GM115 - (Size Code No.) - (Material Code No.)

Size Code No,	Thread Size	F	G	H
-1	M4 x 0,70	7,00	7,70	8,00
-2	M5 x 0,80	8,00	8,80	10,00
-3	M6 x 1,00	10,00	11,00	12,00
-4	M8 x 1,25	13,00	14,30	15,00
-5	M10 x 1,50	17,00	18,90	18,00
-6	M12 x 1,75	18,90	21,70	20,50
-7	M16 x 2,00	23,70	27,30	24,80
-8	M20 x 2,50	26,70	30,70	29,10



Tolerance on all dimensions +/- .25mm.

MOLDED NYLON METRIC NUTS (continued)

*Available in the following materials:

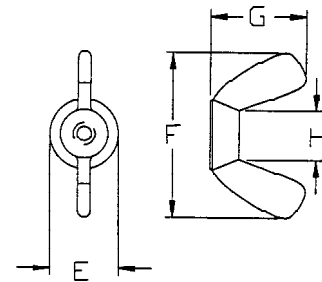
Material Code No.	Material Name
-18	Nylon 6/6, (natural)
-78	Nylon 6/6, (black)

*Available in other materials. See materials list in index.
 Other sizes available on request.

NYLON METRIC WING NUTS

Part No. **GM118** - (Size Code No.) - (Material Code No.)

Size Code No.	Thread Size	F	G	H	E
-1	M4 x 0,70	22,80	12,20	5,80	10,20
-2	M5 x 0,80	22,80	12,20	5,80	10,20
-3	M6 x 1,00	28,00	16,00	7,60	14,20
-4	M8 x 1,25	35,10	18,30	9,10	16,50
-5	M10 x 1,50	35,10	18,30	9,10	16,50
-6	M12 x 1,70	44,70	22,70	15,00	21,10

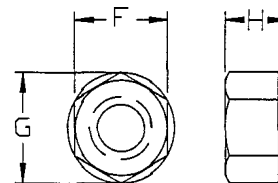


Tolerance on all dimensions +/- .25mm.

NYLON METRIC LOCK NUTS

Part No. **GM119** - (Size Code No.) - (Material Code No.)

Size Code No.	Thread Size	F	G	H
-1	M6 x 1,00	10,90	12,70	6,70



Tolerance on all dimensions +/- .25mm.