

TUBTARA®

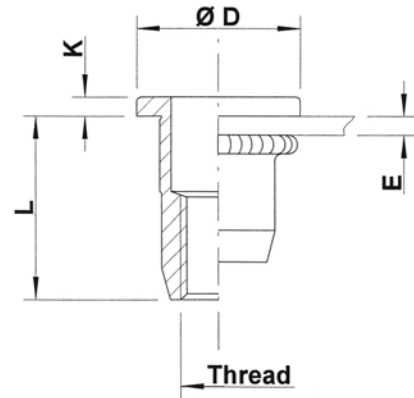
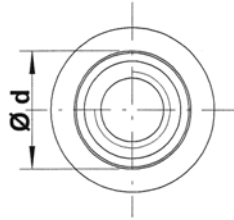
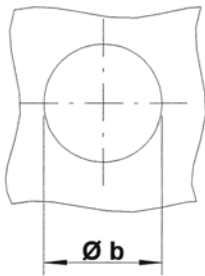


Steel

Flat head
Splined shank
Open end

Zinktop, Cr^{VI} - free (A)
Zinc plated, yellow passivated (B)

UPO RS



Steel

THREAD	TYPE	E = grip	L	b ^{+0,1} = drill dia	d = splined shank	D	K	kg/1000	ORDER CODE (A)	ORDER CODE (B)	BOX Q
M4	UPO30 RS	0,5-3,0	10,75	6,4	6,3	10,0	0,75	1,5	524 709	524 700	5000
	UPO45 RS	3,0-4,5	12,25					1,6	524 729*	524 720*	5000
M5	UPO30 RS	0,5-3,0	12,0	7,4	7,3	11,0	1,0	2,2	525 709	525 700	4000
	UPO55 RS	3,0-5,5	15,0					2,6	525 729	525 720	3000
M6	UPO30 RS	0,5-3,0	14,5	9,4	9,3	13,0	1,5	4,4	526 709	526 700	2000
	UPO55 RS	3,0-5,5	16,5					4,7	526 729	526 720	2000
M8	UPO30 RS	0,5-3,0	16,0	11,5	11,4	16,0	1,5	6,5	528 709	528 700	1250
	UPO55 RS	3,0-5,5	18,5					7,1	528 729	528 720	1200
M10	UPO35 RS	0,8-3,5	19,75	13,0	12,9	18,5	2,25	10,0	520 709	520 700	750
	UPO60 RS	3,5-6,0	22,75					10,8	520 729	520 720	750

* **Non-stock item:** minimum order quantity required after depletion of stock

UKO RS version: available on request

All dimensions in mm

Technical data subject to modification

