

# TUBTARA®

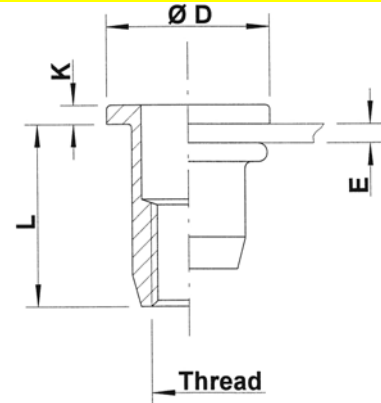
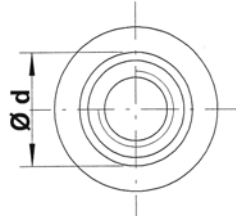
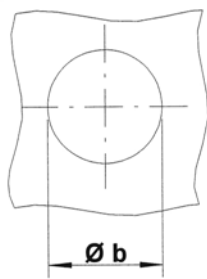


## Steel

Flat head  
Round shank  
Open end

Zinktop, Cr<sup>VI</sup> - free (A)  
Zinc plated, yellow passivated (B)

**UPO / SPO**



Steel

THREAD	TYPE	E = grip	L	b <sup>+0,1</sup> = drill dia	d = shank dia	D	K	kg/1000	ORDER CODE (A)	ORDER CODE (B)	BOX Q
M3	UPO20	0,5-2,0	9,75	5,0	5,0	8,0	0,75	1,0	523 029	523 020*	10000
	UPO30	2,0-3,0	10,75						523 049*	523 040*	
M4	UPO30	0,5-3,0	10,75	6,0	6,0	10,0	0,75	1,5	524 029	524 020	5000
	UPO45	3,0-4,5	12,25						524 049	524 040	
M5	UPO30	0,5-3,0	12,0	7,0	7,0	11,0	1,0	2,1	525 029	525 020	4000
	UPO55	3,0-5,5	15,0						525 049	525 040	
M6	UPO30	0,5-3,0	14,5	9,0	9,0	13,0	1,5	4,3	526 029	526 020	2000
	UPO55	3,0-5,5	16,5					4,7	526 069	526 060	2000
	UPO80	5,5-8,0	19,0					5,0	526 089	526 080	1500
M8	UPO30	0,5-3,0	16,0	11,0	11,0	16,0	1,5	6,4	528 022	528 020	1250
	UPO55	3,0-5,5	18,5					7,0	528 069	528 060	1200
	UPO80	5,5-8,0	21,5					7,8	528 089	528 080	1000
M10	UPO35	0,8-3,5	19,75	12,5	12,4	18,5	2,25	9,8	520 029	520 020	750
	UPO60	3,5-6,0	22,75					10,8	520 049	520 040	700
M10	SPO35	0,8-3,5	21,0	13,0	13,0	19,0	2,0	11,4	520 609	520 600	750
	SPO60	3,5-6,0	24,0					12,1	520 629	520 620	500
M12	UPO40	1,0-4,0	25,0	16,0	16,0	23,0	2,0	19,6	522 029	522 020	400
	UPO70	4,0-7,0	28,0					21,1	522 059	522 050	300

\* **Non-stock item:** minimum order quantity required after depletion of stock

All dimensions in mm

Technical data subject to modification

